

FIAT BRAVA



FIAT



DRIVEN BY PASSION.

For Fiat, cars are a passion. And it's a passion which finds expression as much for the driver as it does for the passengers. All Fiats are the result of a design philosophy which reflects not only a concern for quality engineering, but also for the quality of life.

SAFETY

All Fiats are distinguished by the same design credo - a desire for perfection and an obsession with quality, reliability, durability and strength. When you're in a Fiat, you're in safe hands. Reinforced bodyshell with programmed deformability. Rigid safety cage. Side impact protection. Energy Absorbing Steering wheel (EAS) with collapsible steering column. Fire Prevention System (FPS) with inertia switch and double non-return valve. Airbags and ABS as standard or optional equipment. These are designed to keep you safe. The unique Fiat CODE immobiliser is designed to keep your car safely yours.

SERVICE

When you buy a new Fiat, you buy more than just a car. You also gain access to a network of services and benefits which are designed to make the ownership of your Fiat as enjoyable, affordable and trouble-free as possible.

THE ENVIRONMENT

We respect nature. Not content with conforming to EC regulations governing exhaust emissions, many of our cars are actually ahead of the regulations which have come into effect in recent years. We have removed harmful emissions from our manufacturing processes. And because of our advanced F.A.R.E. system (Fiat Auto Recycling), all Fiats can be recycled at the end of their life.

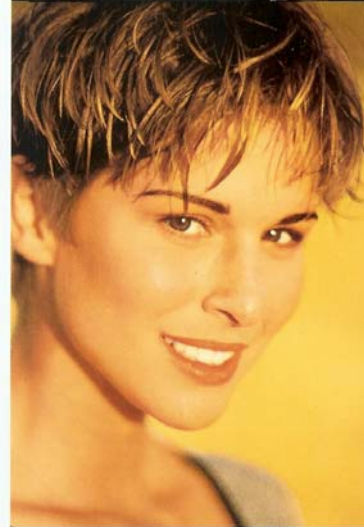
FREEDOM

Individual mobility is the most fundamental of our civil rights. The car represents a privileged means of accessing this right. In the world today, there are approximately 500 million men and women with disabilities who could be denied this privilege. With a wide range of adaptations, Fiats are designed at the outset to enable people with disabilities to enjoy this basic freedom.

When you choose a Fiat, it shows that you share our way of thinking.

It shows you share our values.

And it shows that you share our passion for driving.



YOUR NEW CAR.

Think of a car with unmistakable design flair. Then imagine what Fiat artistry could create with such beautifully flowing lines and sculpted curves as the palette.

Think of a technologically advanced car with three new multi-valve petrol engines and three turbodiesel units - and how much driving pleasure this means for people who enjoy safe, performance motoring.

Think of a car that not only looks after its occupants but takes care of the environment as well. Safety first. A reinforced body and rigid passenger shell. A bar behind the rear seat to stop luggage intruding into the passenger compartment. A steering wheel with a collapsible column. FPS Fire Prevention System with an inertia switch and double fuel cut-off valve.

A driver's airbag as standard, passenger and side airbags as sensible options. ABS available across the range. Fiat CODE engine immobiliser. A car manufactured without environmentally harmful materials and designed to be recycled at the end of its life.

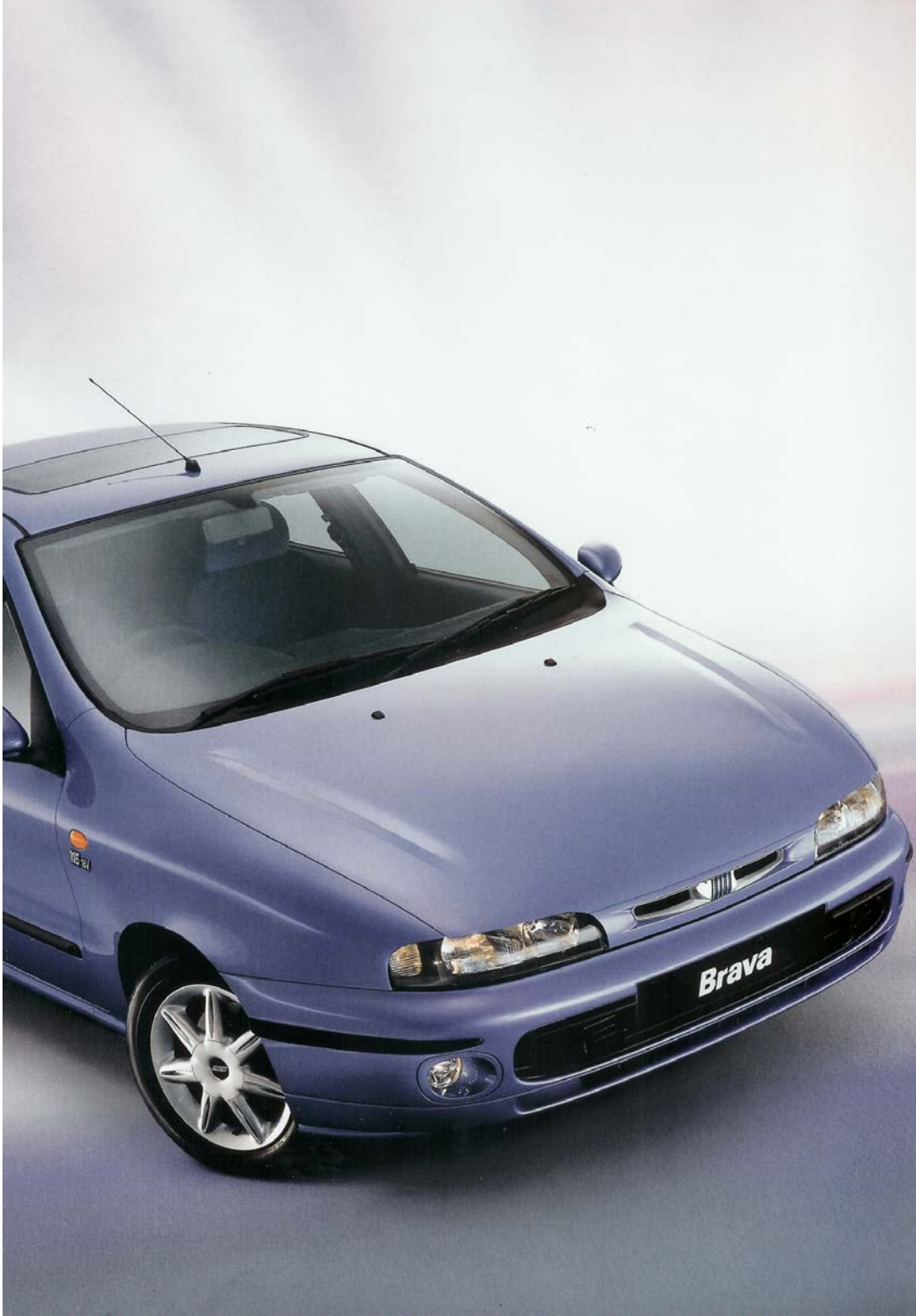
Think of a car that has been designed and built to exceed your expectations - a car that sets the standards for others in its class to follow.

Then think about all those things you won't have a second thought about because you know that Fiat have done all the thinking for you.

Fiat Brava. Your new car. Well worth thinking about, isn't it?

Car shown with optional sunroof.







DESIGNED AND BUILT FOR LIFE.

The moment you slide inside the Fiat Brava, you'll notice how carefully it has been designed. A smooth, wrap-around fascia with no hard edges or sharp angles. Two-tone padded inserts for extra protection. The lower edge of the passenger's side curved upwards for more leg room. Settle into the driving position, adjust the seat and the steering wheel for height,



and feel how relaxed and comfortable you are. The anatomical front seats are padded to provide support for the body - and fitted with an energy absorbing reinforced seat back. The seat cushion is internally reinforced to provide an anti-submarining ridge which prevents occupants slipping under the seat belt in the event of a crash. The head restraint is easily

adjustable by a button on its right hand side. Now that you've settled in, notice how the controls are arranged around you like a cockpit of a plane - and see how easy it is to reach them.

Car shown with optional passenger airbag.



Then take a look at what's around you.

A driver's airbag. A 4-speed heating and ventilation system with a facility for quickly demisting the windscreen. A stereo radio/cassette system with RDS and autoreverse that has been specifically designed for the Brava (it won't fit into other cars so theft is pointless). Notice how it has

been thoughtfully positioned on the fascia so the front passenger can reach it as well.

You can't fail to be impressed by how roomy and well equipped the interior is - and how the sensation of spaciousness and light is enhanced by the choice of trim colours. Anthracite for the console fascia and carpets, light grey for the pillar covers, roof panel sun blind



and courtesy lights.

And despite many touches of luxury, the Brava is also a practical and versatile car. Just fold down the rear seats and you convert the luggage compartment into uncluttered floor space with a load large area.

Exactly what you would expect from the car of your choice.

Car shown with optional passenger and side airbags.

The sumptuous velour interior of the Fiat Brava ELX.

Split-folding rear seat.



**HIGH TECHNOLOGY AT
YOUR SERVICE.**

Fiat have used some extremely advanced high technology to get higher performance and economy from the engines in the Brava - and to provide high levels of driver enjoyment.

The Fiat Brava offers a choice of 6 engines according to model - three petrol units and three diesel units. Each has been designed to



provide the optimum levels of power, performance and economy to suit your driving preferences. The three multivalve petrol engines have aluminium alloy heads and are prime examples of highly sophisticated, computer assisted design and manufacture. The diesel engines are no less impressive. Remember the days

when diesel engines were nosier, less responsive versions of their petrol counterparts? For Fiat, those days are long gone. The turbodiesel powertrains in the Brava are quiet, powerful, responsive and wonderfully fuel efficient - high technology harnessed to deliver high performance.

ENGINES

80 16v	(82 bhp-EC, 107 mph)
100 16v	(103 bhp-EC, 112 mph)
115 16v	(113 bhp-EC, 118 mph)
TD75	(75 bhp-EC, 103 mph)
TD100	(100 bhp-EC, 112 mph)
JTD105	(105 bhp-EC, 115 mph)



80
16v

1242 cc
82 bhp - EC at 5500 rpm
83 lbs.ft. - EC at 4250 rpm
4 cylinders in line with 4 valves per cylinder and twin overhead camshafts with hydraulic tappets.
Electronic MPI and static electronic ignition.



adaptive, phased sequential injection with static ignition - with a control unit to ensure highly efficient combustion and emission control.

The 115 16v unit is a miracle of modern engineering - delivering peak efficiency, low fuel consumption, reduced exhaust emissions and high performance combined with high reliability and low maintenance. The crankshaft has 8 counterweights and a torsional damper to minimise vibration and give quieter running. The ignition system is fitted with an active, selective knock control system that keeps ignition advance close to the knock limit to ensure the optimum balance between performance and fuel consumption. For increased reliability, this engine incorporates self-adaptive phased sequential injection, individual coils and a hot wire air flow meter.

The 80 16v engine is based on the celebrated Fiat FIRE design and offers excellent performance and good fuel economy. The 80 16v engine provides exceptional torque across the range at high or low speeds. On the road, this characteristic means that the car is always responsive and is as easy to drive in congested city streets as it is on the open road.

100
16v

1581 cc
103 bhp - EC at 5750 rpm
106 lbs.ft. - EC at 4000 rpm
4 cylinders in line with 4 valves per cylinder and twin overhead camshafts with hydraulic tappets.
Self-adaptive, phased sequential electronic MPI system and static electronic ignition. Individual coils on each spark plug and selective knock control.

The 100 16v engine features hydraulic tappets and twin overhead cam timing controlled by a toothed belt. The integrated Weber-Marelli electronic management system is a multi-point unit with self-



The TD75 is fitted with a low inertia turbocharger - a new concept which enables the unit to increase torque within the most frequently used range. It's a concept that works. The torque output of the TD75 is 20% higher than the average figure for normally aspirated engines of the same power and it also provides a higher level of responsiveness. An exhaust gas recirculation valve (EGR) and an oxidising catalytic converter helps limit smoke and emission levels.

The TD100 is a flexible, high performance unit with a state-of-the-art Garrett GT 15 turbocharger with intercooler. With a single piece cast iron engine block and aluminium oil sump, the TD100 engine features a Lucas injection system with rotary pump and electronic advance control. For reduced emissions, there is a closed-loop gas circulation system and the exhaust is fitted with a catalytic converter.



115 **16v**

1747 cc
113 bhp - EC at 5800 rpm
114 lbs.ft. - EC at 4400 rpm

4 cylinders in line with 4 valves per cylinder and twin overhead camshafts with hydraulic tappets.

Phased sequential electronic MPI system and static electronic ignition.

Individual coils on each spark plug and selective knock control.

TD **75**

1910 cc
75 bhp - EC at 4200 rpm
108 lbs.ft. - EC at 2750 rpm

4 cylinders in line, indirect injection diesel with turbocharger, rotary injection pump and oil radiator.

TD **100**

1910 cc
100 bhp - EC at 4200 rpm
148 lbs.ft. - EC at 2250 rpm

4 cylinders in line, indirect injection diesel with turbocharger and intercooler.

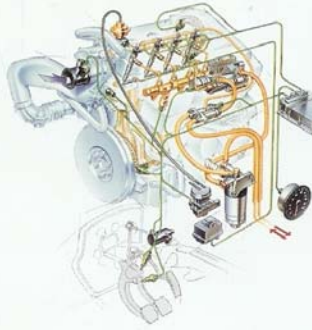
Rotary injection pump with electronic advance control and EGR valve.

JTD

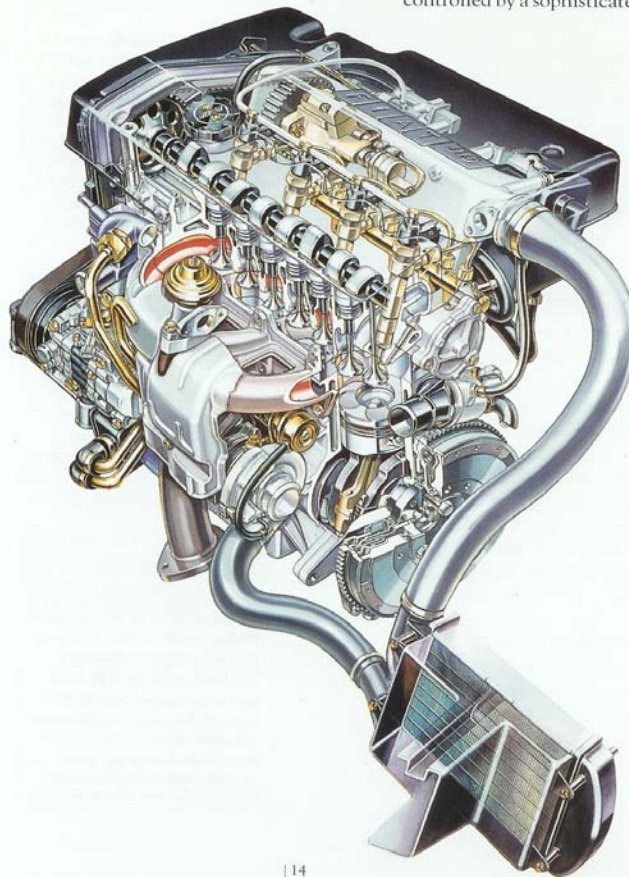
105

1910 cc
105 bhp - EC at 4000 rpm
148 lbs.ft. - EC at 1500 rpm
4 cylinders in line, direct injection with electronically controlled common rail UNIJET system, turbocharger and intercooler.

The JTD105 is high technology at its best. In addition to the Garrett GT 15 turbocharger, the JTD105 utilises a common rail injection system - designed and patented by Fiat and developed in close association with Bosch. Common rail injection technology allows the engine to be fitted with a fully electronic injection system - hitherto only available on high performance petrol engines. Unlike conventional injection systems (pre-chamber or direct injection), common rail injection is independent of the engine speed. The pump, which generates constant high pressure, and the injectors are both controlled by a sophisticated



electronic system that optimises the amount of fuel and the pressure with which it is injected. The system also pre-injects a small amount of fuel to warm up the combustion chamber - with sensational results. This engine produces higher power and torque with fuel consumption up to 15% lower than a comparable pre-chamber ignition unit - reducing emissions and making it quieter, smoother and more efficient.



Cutaway diagram of the 1.9 JTD turbodiesel engine.

Common rail direct injection system.

ADVANCED DESIGN.

The Brava is a testament to the design skill and engineering ingenuity of Fiat. When designing a car, there are virtually an infinite number of factors to be considered. The engines must be powerful and flexible yet economical. The suspension system must be soft enough to absorb the unevenness of the road, and yet firm enough to negotiate corners with pinpoint accuracy. In many cars, these competing factors are usually compromised. In the Fiat Brava, they're simply finely balanced.

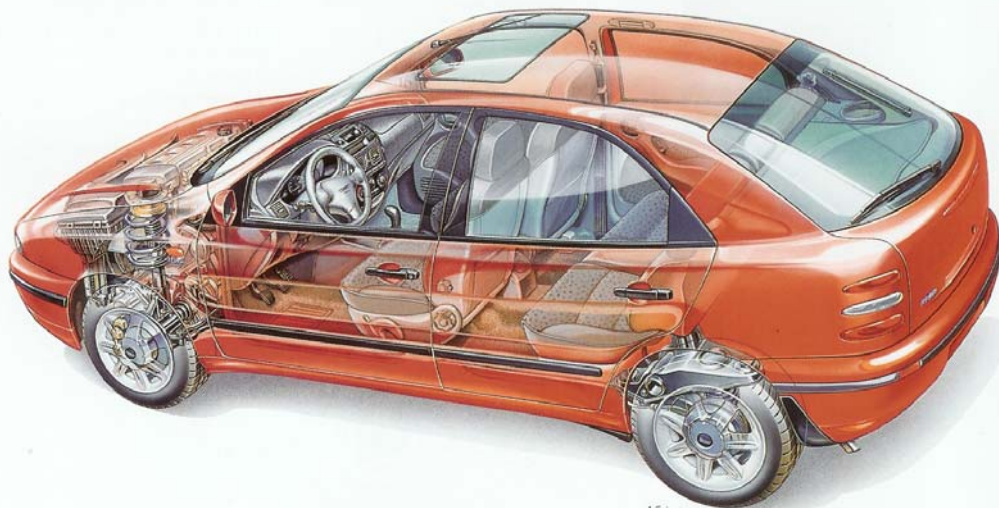
SUSPENSION

The Fiat Brava has an independent suspension system. At the front, there is a MacPherson strut layout with offset coil springs, forged steel wishbones, anti-roll bar and telescopic dampers. The rear suspension features tie rods connected directly to the body via a rigid frame -with coil springs, anti-roll bar and gas dampers with vulcanised bushes. This

system provides superlative handling, outstanding control and reduced road noise.

BODY

The chassis of the Fiat Brava has class beating torsional rigidity to help provide excellent stability and handling - and to reduce noise and vibration, especially on rough and uneven roads.





STEERING

The power steering system is light and direct - keeping the driver in touch with the road while taking all the hard work out of steering.

BRAKING SYSTEM

With diagonally split dual braking circuits, brake servo and a braking regulator, the braking system will still function effectively even if one circuit is accidentally damaged. A 4-channel, 4-sensor ABS system is standard on the Fiat Brava 115 16v ELX and an option on all other models.

AUTOMATIC TRANSMISSION

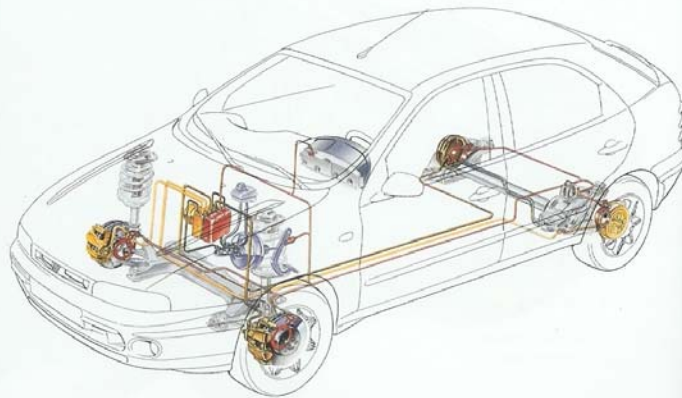
A four-speed automatic gearbox is available with the 100 16v engine only. This is a sophisticated transmission system with three settings to make driving the effortless pleasure it should be and exploit the power of the engine to the full. You can set the gearbox to 'Normal' for a balanced performance and fuel economy, 'Sport' for high performance motoring or 'Ice' when driving in difficult conditions on slippery, unpredictable roads.

When driving, the gear lever can be set in four positions to maximise fuel consumption or to select the optimum ratios for specific conditions - for example an exceptionally steep gradient or towing a caravan.

Side impact protection.

ABS is standard on the Fiat Brava 115 16v ELX.

Three head restraints integrated into the rear seat back for greater safety.



SAFETY IN ACTION.

The Fiat Brava incorporates some of the very latest technology to provide advanced standards of safety. Driver and passengers are encased in a reinforced steel 'safety cell' which is itself protected by a series of crumple zones which collapse progressively to absorb impact more effectively. Protection is all around you - a steel beam in the fascia, reinforcements in the floor, side impact bars in the doors and the rear seat back fitted with adjustable head restraints and reinforced by a protective bar. Driver and front passenger are held securely by pyrotechnic pretensioner seat belts and the seat cushions are shaped and reinforced to prevent the body slipping under the seat belt in the event of severe impact.

Fiat's safety consciousness doesn't stop there. The energy-absorbing steering wheel (EAS) has a collapsible column, the driver's airbag is standard and passenger and side airbags are available as options. The FPS Fire Prevention System is fitted as standard on all models. Using an inertia switch and a twin fuel cut-off valve, FPS prevents fire occurring after an accident. The Brava's main electrical cables are fused to prevent fire occurring as a result of a short circuit.

The Fiat Brava can take care of itself just as well as it looks after you.



With the Fiat CODE engine immobiliser fitted as standard, theft is virtually impossible. Without the correct key, the engine simply cannot be started.

Driver's airbag standard on all models. Passenger and side airbags available as options.

Reinforced body with programmed crumple zones.





**THREE FIAT BRAVAS
MADE TO MEASURE
FOR YOU.**

Although every Fiat Brava is designed and built to provide the optimum combination of performance, comfort and safety, the range is large enough to enable you to choose a model which is precisely matched to your motoring needs. In fact you can choose from three different specification levels and six performance levels. Do you prefer diesel or petrol power? Are



you looking for high performance or fuel economy or a combination of both? Whichever Brava you ultimately choose, there are some things that never change - an exceptionally high level of standard equipment, meticulously finished interiors and a wide range of options to make your car even more individual.

THE RANGE

SX: 80 16v, 100 16v, 100 16v Auto., TD75, TD100

HSX: 100 16v

ELX: 100 16v, 115 16v, JTD105



SX

A SOLID INVESTMENT.

The Fiat Brava SX is the perfect choice for anyone looking for a combination of comfort, spaciousness and versatility coupled with lively performance and low running costs. Equally at home in city streets or out on the motorway, the SX has a very high level of standard equipment for an entry model to the range. For interior comfort, you'll find the 4-speed heating and ventilation system will keep you cool when the going gets hot - and warm inside when it's cold outside. The front windows are electrically operated with one-touch control on the driver's side - and the fascia mounted RDS stereo radio/cassette

has autoreverse. There's even an electric sunroof. Safety features include driver's airbag and height adjustable driver's seat and steering wheel.

Rear courtesy light.

Comprehensive instrumentation.

Spacious luggage compartment.

Height adjustable driver's seat.

FIAT BRAVA SX	Top Speed (mph)	Acceleration 0-62 mph (secs)	Combined fuel consumption (mpg)
80 16v	107	13	40.9
100 16v	112	11.5	36.2
100 16v Auto.	112	12.2	30.7
TD75	103	15.1	44.1
TD100	112	11	43.5

FIAT BRAVA SX • STANDARD EQUIPMENT

- Power steering
- Body coloured bumpers
- Body coloured door mirrors
- Driver's airbag
- 4-speed heating and ventilation system
- Electrically operated front windows (one-touch control on driver's side)
- Central locking
- Tinted windows and rear wash/wipe
- Remote hatch release
- Illuminated luggage compartment
- Height adjustable driver's seat and steering wheel
- Pyrotechnic pre-tensioner front seat belts
- Fiat CODE engine immobiliser
- Rear seat with head restraints
- Rev counter
- Passenger compartment air recirculation with external vent
- RDS stereo radio/cassette
- Electric sunroof





HSX

STYLE ON THE MOVE.

With its striking body coloured bumpers and door mirrors, alloy wheels and low profile tyres the elegance of the Fiat Brava HSX is only matched by the extremely high standard specification. For people who look for distinct flair and outstanding value for money in a car, the HSX is custom built to delight you. The interior is sumptuously appointed and features a sports steering wheel, metallic grey instrument panel and ventilation grill. You will find added touches of luxury all around you - small details that can make a big difference. Like the way the courtesy light comes on when you remove the ignition key and the fact that the RDS stereo radio/cassette delivers the purest high fidelity through six speakers or the

extra versatility provided by the split/folding rear seat. For sporty performance in exceptional style and comfort, the Fiat Brava HSX takes some beating.

Car shown with optional air conditioning.

Optional non-smoking kit.

Comprehensive instrumentation.

Integrated front foglights.

Striking alloy wheels.

FIAT BRAVA HSX	Top speed (mph)	Acceleration 0-62 mph (secs)	Combined fuel consumption (mpg)
100 16v	112	11.5	36.2

FIAT BRAVA HSX • STANDARD EQUIPMENT

In addition to the standard equipment on the SX, the HSX features:

- Specially designed alloy wheels with 185/55 R15 tyres
- RDS stereo radio/cassette
- Sports interior
- Split/folding rear seat
- Illuminated glove compartment
- Timed courtesy lights with gradual fade
- Integrated front foglights





ELX

IN A CLASS OF ITS OWN.

The Fiat Brava ELX is everything you'd expect from the best-equipped and most stylish car in the range. From the integrated front foglights to the elegant rear badging, the ELX has class written all over it. The interior is designed and built for comfort with electric front and rear windows and lumbar adjustable driver's seat just some of the features which make the ELX such a delight to drive. The seats, door panels and front arm rest with a convenient concealed stowage compartment are trimmed in luxurious Elite velour - and for extra safety and control the doors mirrors are electrically operated and

heated and ABS brakes are standard on the 115 16v ELX. Other standard features include remote central locking and exceptionally attractive alloy wheels.

Air conditioning (115 16v and JTD105 ELX, in place of sunroof).

Illuminated instrument panel.

Stowage compartment.

Striking alloy wheels.

FIAT BRAVA ELX	Top Speed (mph)	Acceleration 0-62 mph (secs)	Combined fuel consumption (mpg)
100 16v	112	11.5	36.2
115 16v	118	10.3	33.6
JTD 105	115	10.6	51.4

FIAT BRAVA ELX • STANDARD EQUIPMENT

In addition to the standard equipment on the HSX, the ELX features:

- ABS (115 16v ELX)
- Alloy wheels
- Remote controlled central locking
- Electric rear windows
- Lumbar adjustable driver's seat
- Elite velour trim
- Instrument light dimmer
- Doors open/ brake lights warning light
- Air conditioning (115 16v and JTD105 ELX, in place of sunroof)





FIAT ACCESSORIES. DESIGNED TO GIVE YOU ADDED PLEASURE.

As exciting as it is to drive the Brava there are lots of ways you can make your time behind the wheel even more enjoyable - and this is exactly why we offer a range of exclusive products which have been designed to help you get maximum pleasure from your Brava.

All Fiat Accessory products conform to exacting standards. They are easy to use, reliable, safe and functional. You will find a selection of Fiat accessories on these pages - and for further details please contact your local Fiat dealer.

Fiat Accessories.
Helping you get the most out of your Fiat.

ACCESSORIES

- | | |
|--------------------------|-----------------------|
| • Rear spoilers | • Car mats |
| • Alloy wheels | • Headlamp protectors |
| • Roof bars | • Bicycle racks |
| • Sports steering wheels | • Tow bars |
| • Audio equipment | • Seat covers |

FIAT
Accessories

When you buy a new Fiat, you buy more than just a car. Behind every car we sell there is the reassurance of a whole range of customer benefits and



services designed to make the ownership of your Fiat as enjoyable, affordable and trouble-free as possible.

12 MONTH UNLIMITED MILEAGE MECHANICAL WARRANTY

Any repairs required as a result of faulty materials or manufacture are carried out free of all charges either for parts or labour.

THE MASTERCARE PROGRAMME

At moderate cost, you can obtain further peace of mind by purchasing an additional 12, 24, 36 or 48 months mechanical warranty called Mastercare.

The Mastercare Programme also provides the option to extend your Fiat AA Assurance cover.

8 YEAR ANTI-PERFORATION WARRANTY

Subject to regular inspections being carried out, any perforation of the bodywork due to corrosion will be repaired free of all parts and labour charges during the first 8 years.

3 YEAR PAINTWORK WARRANTY

Any paintwork defects due to faulty materials or manufacture will be rectified free of charge during the first 3 years.

FIAT AA ASSURANCE

12 months Fiat AA Assurance cover comes free with every new Fiat, providing motoring peace of mind.

Cover includes the full range of AA Emergency services (Roadside Assistance, Relay, Relay Plus, Home Start and Pan European cover) 24 hours a day, as well as free access to travel information, legal advice and technical information.

Fiat AA Assurance cover can be extended as part of the Mastercare Programme.

FIAT INSURANCE

Is a manufacturer supported insurance programme, providing a wide range of cover at highly competitive premiums.

Additionally, up to 65% No Claims Bonus may be transferred from your existing policy.

FINANCE PLANS

Fiat dealers offer an extensive range of finance plans and credit protection insurance to satisfy the needs of Fiat customers - for both private and business use. Your Fiat dealer will be pleased to give you full details of the services available and to arrange a finance plan to satisfy your particular requirements.

Written quotations are available on request. A guarantee may be required.

12 MONTH PARTS AND REPAIRS GUARANTEE

All genuine Fiat parts are guaranteed for 12 months, as are repairs carried out by any Fiat dealer using genuine parts.

FIXED SERVICE COSTS

All Fiat dealers operate a 'Menu Pricing' programme which guarantees fixed service and replacement costs with no hidden extras. The price you see is the price you'll pay, unless you have given your consent for further work to be carried out.

FIAT AND THE DISABLED MOTORIST

Through Motability, Fiat offers preferential leasing and hire purchase schemes over periods of 3 to 5 years. A wide range of adaptations are also available through your Fiat dealer to match individual needs.

FIAT INFORMATION AND CUSTOMER SERVICE

A freephone number (0800 717000) gives you access to our dedicated information and customer services facilities, providing you with details of Fiat dealers offering additional services such as extended workshop hours, Auto Clinic and Approved Bodyshop facilities.

Fiat also believe it is important to stay in contact with you and will, subject to your agreement, telephone you from time to time to ensure you are happy with your Fiat and the service you receive from your dealer.

TECHNICAL SPECIFICATIONS

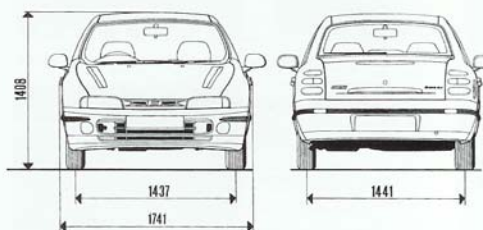
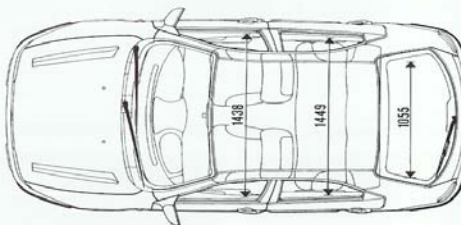
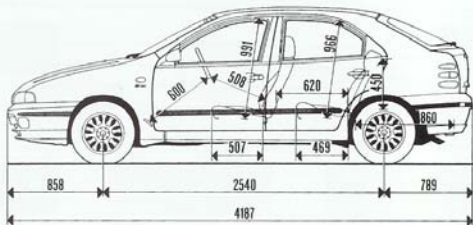
FIAT BRAVA	80 16v SX	100 16v SX - HSX - ELX	100 16v SX Automatic	115 16v ELX
ENGINE				
No. of cylinders, arrangement	4 in-line, transverse front	4 in-line, transverse front	4 in-line, transverse front	4 in-line, transverse
Bore x stroke (mm)	70.8 x 78.9	86.4 x 67.4	86.4 x 67.4	82 x 82.7
Displacement (cm ³)	1242	1581	1581	1747
Compression ratio	10.2 : 1	10.5 : 1	10.5 : 1	10.3 : 1
Max. power: bhp (kW-EEC) @ rpm	82 (60) 5500	103 (76) 5750	103 (76) 5750	113 (83) 5800
Max. torque: lbs.ft (Nm-EEC) @ rpm	83 (113) 4250	106 (144) 4000	106 (144) 4000	114 (154) 4400
Timing system	DOHC	DOHC	DOHC	DOHC
Fuel system	Electronic multi point injection	Electronic multi point injection	Electronic multi point injection	Phased sequentia electronic multi point inject
Ignition	Electronic with static advance integrated with fuel injection	Electronic with static advance integrated with fuel injection	Electronic with static advance integrated with fuel injection	Electronic with static advance integrated with fuel injectic
TRANSMISSION				
Drive	Front	Front	Front	Front
Gears: 1 st	3.909 : 1	3.909 : 1	2.807 : 1	3.909 : 1
2 nd	2.158 : 1	2.238 : 1	1.479 : 1	2.238 : 1
3 rd	1.345 : 1	1.444 : 1	1 : 1	1.520 : 1
4 th	0.974 : 1	1.029 : 1	0.735 : 1	1.156 : 1
5 th	3.829 : 1	0.816 : 1	-	0.971 : 1
Reverse	3.818 : 1	3.909 : 1	2.769 : 1	3.909 : 1
Final drive ratio	3.867 : 1 (15/58)	3.353 : 1 (17/57)	3.565 : 1 (23/82)	3.353 : 1 (17/57)
STEERING				
Type	Rack and pinion with power steering	Rack and pinion with power steering	Rack and pinion with power steering	Rack and pinion with power steering
Turning circle (m)	10.4	10.4	10.4	10.4
BRAKES - D (disc) - T (drum)				
Front: diameter (mm)	D 257	D 257	D 257 ventilated	D 257 ventilated
Rear: diameter (mm)	T 180	T 203	T 203	T 203
SUSPENSION				
Front	Independent using MacPherson struts with off-set coil springs, forged steel wishbones and an anti-roll bar			
Rear	Independent with trailing arms, coil springs and an anti-roll bar			
DIMENSIONS				
Wheelbase (mm)	2540	2540	2540	2540
Front/rear track (mm)	1451 / 1453	1451 / 1453 - 1445 / 1447 1439 / 1441	1451 / 1453	1439 / 1441
Length/width/height (m)	4.19 / 1.74 / 1.41	4.19 / 1.74 / 1.41	4.19 / 1.74 / 1.41	4.19 / 1.74 / 1.41
Luggage capacity (VDA, dm ³)	380 / 1165	380 / 1165	380 / 1165	380 / 1165
WHEELS				
Tyres	175/65 R 14	175/65 R 14 185/55 R 15 (HSX)	175/65 R 14	185/60 R 14
ELECTRICAL EQUIPMENT (12V)				
Battery capacity (Ah)	40	50	50	50
Alternator: max. current (A)	65	75	75	85
WEIGHTS - CAPACITIES				
Kerb weight* (DIN, kg)	1040	1090	1120	1130
Fuel tank capacity (litres)	85	85	85	85
PERFORMANCE				
Top speed (mph)	107	112	112	118
Acceleration (sec.) 0-62 mph	13	11.5	12.2	10.3
EEC FUEL CONSUMPTION mpg (l/100km)**				
Urban (cold)	29.7 (9.5)	26.2 (10.8)	22.1 (12.8)	24.6 (11.5)
Extra-urban	52.3 (5.4)	46.3 (6.1)	39.8 (7.1)	42.8 (6.6)
Combined	40.9 (6.9)	36.2 (7.8)	30.7 (9.2)	33.6 (8.4)

* Unladen

** Fuel consumption figures in accordance with the Passenger Car Fuel Consumption Order 1983

TD75 SX	TD100 SX	JTD105 ELX
4 in-line, transverse front	4 in-line, transverse front	4 in-line, transverse front
82 x 90.4	82 x 90.4	82 x 90.4
1910	1910	1910
20.7 : 1	20.5 : 1	18.45 : 1
75 (55)	100 (74)	105 (77)
4200	4200	4000
108 (147)	148 (200)	148 (200)
2750	2250	1500
SOHC	SOHC	SOHC
Indirect injection with turbocharger	Indirect injection with turbocharger	Direct injection with turbocharger
By compression	By compression	By compression
Front	Front	Front
3.909 : 1	3.909 : 1	3.909 : 1
2.238 : 1	2.238 : 1	2.238 : 1
1.444 : 1	1.444 : 1	1.444 : 1
1.029 : 1	1.029 : 1	1.029 : 1
0.816 : 1	0.767 : 1	0.767 : 1
3.909 : 1	3.909 : 1	3.909 : 1
3.353 : 1 (17/57)	3.150 : 1 (20/63)	3.053 : 1 (19/58)
Rack and pinion with power steering	Rack and pinion with power steering	Rack and pinion with power steering
10.4	10.4	10.4
D 257	D 257 ventilated	D 257 ventilated
T 203	T 203	T 203
2540	2540	2540
1451 / 1453	1451 / 1453	1445 / 1447 1439 / 1441
4.19 / 1.74 / 1.41	4.19 / 1.74 / 1.41	4.02 / 1.75 / 1.47
380 / 1165	380 / 1165	380 / 1165
175/65 R 14	185/60 R 14	185/60 R 14
60	60	60
75	75	85
1170	1180	1195
85	85	60
103	112	115
15.1	11	10.6
32.8 (8.6)	32.5 (8.7)	38.7 (7.3)
54.3 (5.2)	53.3 (5.3)	62.8 (4.5)
44.1 (6.4)	43.5 (6.5)	51.4 (5.5)

DIMENSIONS



STANDARD AND OPTIONAL EQUIPMENT

	SX	HSX	ELX
EXTERNAL			
Body-coloured bumpers			
Body-coloured door mirrors			
Rear wash/wipe			
Front foglights	-		
Electrically adjustable and heated mirrors	-	-	
Headlamp washers	-	-	
Alloy wheels	-		
Electric sunroof			OPT 115 16v, JTD105
Metallic paint	•	•	•
INTERNAL			
Height adjustable driver's seat and steering wheel			
Heated front seats	-	-	
Split-folding rear seat			
Rear head restraints			
Rev counter			
Velour trim	-	-	
Sports interior	-		-
Illuminated glovebox	-		
Non-smoking kit	NCO	NCO	NCO
FUNCTIONAL/ELECTRICAL			
High level brake light			
Fiat CODE immobiliser			
Adjustable headlights			
Air recirculation facility			
Air conditioning (in lieu of sunroof)	•	•	OPT 100 16v
Air conditioning	-	-	115 16v, JTD105 ONLY
Remote hatch release			
Power steering			
Central locking		-	-
Electric front windows (one-touch driver's side)			
Illuminated boot			
6-speaker RDS EON stereo radio/cassette with CD compatibility*			
Delay courtesy light	-		
Electric rear windows	-	-	
Alarm	-	-	
Remote central locking	-		
SAFETY			
FPS fire prevention system			
Height-adjustable front seat belts			
Pre-tensioner front seat belts			
Driver's airbag			
ABS	•	•	OPT 100 16v, JTD105
Passenger airbag	•	•	•
Side airbags**	•	•	•

*Compatible with Grundig MCD-36 6 disc CD changer **Only available with passenger airbag

Further information on the internet at <http://www.fiat.co.uk>

■ = standard • = optional - = not available NCO = no cost option

BODY COLOURS

SOLID



169 Enamel Red



249 White



406 Ceylon Blue

METALLIC



124 Barocco Red



359 Lichen Green



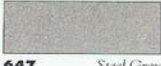
384 Emerald Green



409 Sinfonia Blue



416 Way Blue



647 Steel Grey



705 Cognac Beige



712 Juarra Ivory



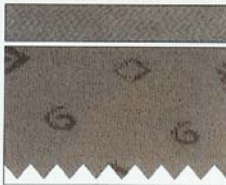
820 Ink Black



823 Sassi Grey

INTERIOR UPHOLSTERY

All upholstery patterns are shown at 50% of actual size



280 Jazz Grey Velour



281 Jazz Blue Velour



357 Blue/Green Cloth



358 Red/Blue Cloth



359 Beige/Blue Cloth



361 Red Twist Cloth



362 Blue Twist Cloth

	SX			HSX		ELX	
	Cloth			Cloth		Velour	
	357 Blue/Green	358 Red/Blue	359 Beige/Blue	361 Red Twist	362 Blue Twist	280 Jazz Grey	281 Jazz Blue
SOLID							
169 Enamel Red		•		•		•	
249 White	•				•		•
406 Ceylon Blue	•				•	•	
METALLIC							
124 Barocco Red		•		•		•	
359 Lichen Green	•				•		•
384 Emerald Green	•				•	•	
409 Sinfonia Blue			•		•		•
416 Way Blue	•				•		•
647 Steel Grey		•		•			•
705 Cognac Beige			•		•		•
712 Juarra Ivory			•		•		•
820 Ink Black			•	•		•	
823 Sassi Grey	•				•		•

Performance figures and fuel consumption figures supplied by Fiat SpA. Fuel consumption figures are in accordance with the Passenger Car Fuel Consumption Order 1983.

Products offered for sale may differ from those described or illustrated in this brochure due to later production changes in specifications, components or place of manufacture. The contents of this brochure are therefore to be treated as representations as to the current availability of products as described, or as to products actually offered for sale. Fiat Auto (UK) Ltd reserves the right to make changes at any time, without notice, to prices, colours, materials, equipment, specifications and models and also to discontinue models. Variations in product specification do occur from time to time - please check the exact specification with the dealer at the time of order.

Fiat Auto (UK) Ltd, Fiat House, 266 Bath Road, Slough SL1 4HJ. ELL1298