

Engine & Cooling	Fuel	Ignition	Electrical	Running gear	Torque settings	Capacities	Notes & Illustrations
------------------	------	----------	------------	--------------	-----------------	------------	-----------------------



## Automotive Technical DATA BOOK

Click on one of the buttons above to view data for this car. To return to this screen and make another choice, click anywhere on the data screen.

MENU

HELP

### Engine and cooling system 127 & Fiorino, 1050 1981 to 1988

Type		127 A.000
Capacity (cm <sup>3</sup> ) / number of cylinders		1049 / 4
Compression ratio / pressure	bar	9.3 /
Oil pressure	bar	[2.9 to 3.9]
Oil temperature	°C	100
Valve clearance - inlet	mm	0.30
Valve clearance - exhaust	mm	0.40
Firing order		1-3-4-2
No 1 cylinder position		TBE
Thermostat opening temperature	°C	80 to 84
Radiator cap pressure	bar	0.78

### Fuel system 127 & Fiorino, 1050 1981 to 1988

Idle speed - manual [auto]	rpm	850±50
Fast idle speed - manual [auto]	rpm	—
CO @ idle speed [3000 rpm] - see page VI	%	≤3.0
HC @ idle speed [3000 rpm] - see page VI	ppm	≤1200
CO <sub>2</sub> @ idle speed [3000 rpm] - see page VI	%	—
O <sub>2</sub> @ idle speed [3000 rpm] - see page VI	%	—
Carburettor / fuel injection		Solex/Weber
Type / ref		S: C 32 TDI 2/4. W: 32 ICEV
Main jet / needle		115
Injection pressure	bar	—
Pump pressure	bar	0.18
Octane rating	RON	98[R]

### Ignition system 127 & Fiorino, 1050 1981 to 1988

Type		Contact breaker - CIS
Ignition coil		Various
Primary resistance	ohms	2.6 to 3.3
Ballast resistor	ohms	—
Voltage - Tmnl 15(+) to earth	V	—
Distributor		Marelli
Points gap (air gap)	mm	0.40±0.03
Dwell angle	° (%)	55±3
Condenser capacity	µF	0.20 to 0.25
Rotation		—
Ignition timing - basic [static	° Crankshaft @ rpm	10 BTDC @ idle
V = Vacuum NV = No Vacuum		NV
Total ignition advance	° Crankshaft @ rpm	—
	° Crankshaft @ rpm	—
	° Crankshaft @ rpm	—
Centrifugal check.	° Crankshaft @ rpm	0 @ 800 to 1200
	° Crankshaft @ rpm	18 to 22 @ 3000
	° Crankshaft @ rpm	23 to 27 @ 4500
Vacuum range check	mbar	—
Maximum vacuum advance	° Crankshaft	—
Spark plugs		Marelli/Champion
Type		CW7LPR / RN9YC
Electrode gap	mm	0.70 to 0.80

### Electrical system 127 & Fiorino, 1050 1981 to 1988

Battery	V / CC / RC	12 / 175 / 60
Alternator voltage / full load current / engine rpm		14.0 to 14.5 / _ / 3000
Starter motor current / voltage - cranking	A / V	170 / 9.4
- locked	A / V	—

### Running gear 127 & Fiorino, 1050 1981 to 1988

<b>Brakes -</b>		
Front (min. friction material thickness)	mm	1.5
Rear (min. friction material thickness)	mm	1.5

<b>Tyres</b>		
Saloon	Size	135x13: 145x13
Estate / Van	Size	135x13: 145x13
Pressure - front / rear - Saloon	bar	1.9 / 1.9
- Estate / Van	bar	1.9 / 1.9

### Front suspension / wheel alignment

Toe-in (+) / Toe-out (-)	mm [°]	-3.5 to +0.5 <sup>1</sup>
Camber		+1°25'±30' <sup>2</sup>
Castor		+1°40'±30' <sup>3</sup>
King pin inclination		—

### Rear suspension / wheel alignment

Toe-in (+) / Toe-out (-)	mm [°]	0 to +4.0 <sup>4</sup>
Camber		-1°±30' <sup>5</sup>

### Torque wrench settings 127 & Fiorino, 1050 1981 to 1988

Cylinder head - stage 1	Nm	83
- stage 2	Nm	—
Cylinder head - stage 3	Nm	—
- stage 4	Nm	—
Big-end bearings	Nm	51
Main bearings	Nm	80
Clutch cover	Nm	15
Flywheel [driveplate]	Nm	83
Front hubs	Nm	M18: 137. M20: 157
Rear hubs	Nm	M18: 137. M20: 157
Wheel nuts / bolts	Nm	—
Spark plugs	Nm	25 to 30

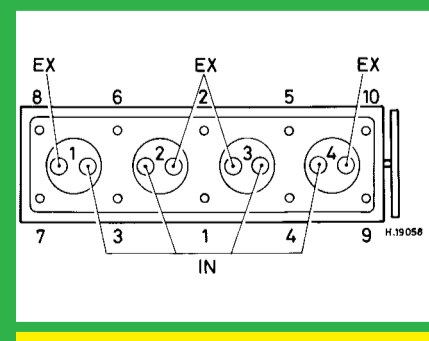
### Capacities 127 & Fiorino, 1050 1981 to 1988

Engine oil & filter	litres	3.4 [83 MY: 3.6]
Gearbox - 4-speed [5-speed]	litres	2.5 [3.4]
Automatic transmission - refill	litres	—
Final drive	litres	WT
Cooling system	litres	5.5 [83 MY: 5.8]
Fuel tank	litres	31. 1983 MY: 42

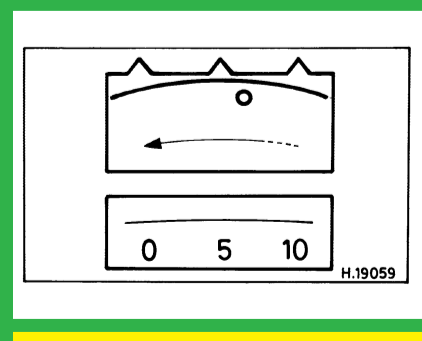
### Notes and Illustrations

- <sup>1</sup>Fiorino: -1.0 to +1.0. 83MY: -5.5 to +1.5
- <sup>2</sup>Fiorino: +1° to 2°. 83 MY: +1°40' to 2°40'
- <sup>3</sup>Fiorino: +1°30' to 2°30'. 83 MY: +2°30' to 3°30'
- <sup>4</sup>Fiorino: +3.0 to 7.0
- <sup>5</sup>Fiorino: +20' to 1°20'

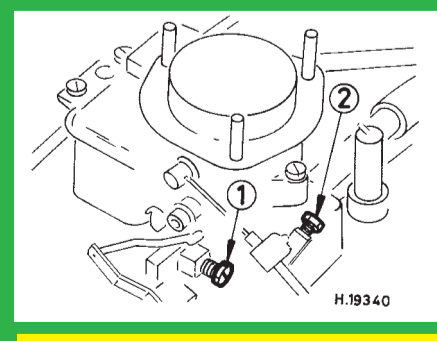
1: Idle speed 2: CO / Mixture



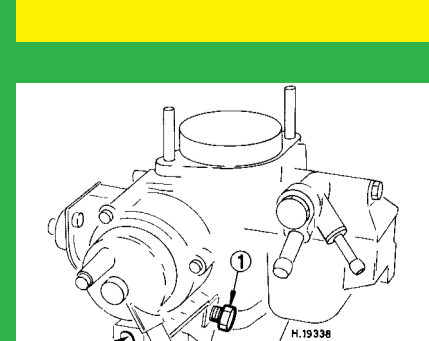
1049 cm<sup>3</sup>



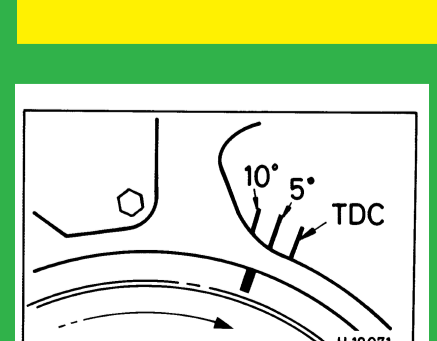
1049 cm<sup>3</sup>



Solex TDI



Weber ICEV



1049 cm<sup>3</sup>, alternative