

Engine & Cooling	Fuel	Ignition	Electrical	Running gear	Torque settings	Capacities	Notes & Illustrations
------------------	------	----------	------------	--------------	-----------------	------------	-----------------------



# Automotive Technical DATA BOOK

Click on one of the buttons above to view data for this car. To return to this screen and make another choice, click anywhere on the data screen.

**MENU**      **HELP**

### Engine and cooling system      Uno 45 & Van (903)      1990 to 1994

Type		146 A. 048 OHV. 33kW
Capacity (cm <sup>3</sup> ) / number of cylinders		903 / 4
Compression ratio / pressure	bar	9.0±0.1 / _
Oil pressure	bar	[2.9 to 3.9]
Oil temperature	°C	100
Valve clearance - inlet	mm	0.15±0.05
Valve clearance - exhaust	mm	0.20±0.05
Firing order		1-3-4-2
No 1 cylinder position		TCE
Thermostat opening temperature	°C	87±2
Radiator cap pressure	bar	0.98

### Fuel system      Uno 45 & Van (903)      1990 to 1994

Idle speed - manual [auto]	rpm	750 to 800
Fast idle speed - manual [auto]	rpm	_
CO @ idle speed [3000 rpm] - see page VI	%	1.5±0.5
HC @ idle speed [3000 rpm] - see page VI	ppm	≤1200
CO <sub>2</sub> @ idle speed [3000 rpm] - see page VI	%	_
O <sub>2</sub> @ idle speed [3000 rpm] - see page VI	%	_
Carburettor / fuel injection		Weber
Type / ref		32 ICEV 61/250
Main jet / needle		110
Injection pressure	bar	_
Pump pressure	bar	0.18
Octane rating	RON	97[E 95 RON]

### Ignition system      Uno 45 & Van (903)      1990 to 1994

Type		Contact breaker - CIS
Ignition coil		Various
Primary resistance	ohms	2.6 to 3.3 (typical)
Ballast resistor	ohms	_
Voltage - Tmnl 15(+) to earth	V	_
Distributor		Ducellier/Marelli
Points gap (air gap)	mm	D:0.37 to 0.43 <sup>1</sup>
Dwell angle	° (%)	D: 55±3. M: 53±2
Condenser capacity	µF	D: 0.20 to 0.25 <sup>2</sup>
Rotation		Clockwise
Ignition timing - basic [static	° Crankshaft @ rpm	5 BTDC @ 750 to 800
V = Vacuum    NV = No Vacuum		NV
Total ignition advance	° Crankshaft @ rpm	_
	° Crankshaft @ rpm	_
	° Crankshaft @ rpm	_
Centrifugal check.	° Crankshaft @ rpm	0 @ 900±200
	° Crankshaft @ rpm	15±2 @ 2200±200
	° Crankshaft @ rpm	32±2 @ 4750±200
Vacuum range check	mbar	133 to 333
Maximum vacuum advance	° Crankshaft	12±2
Spark plugs		Bosch/Champion
Type		FR7DC / RC9YC
Electrode gap	mm	0.70 to 0.80

### Electrical system      Uno 45 & Van (903)      1990 to 1994

Battery	V / CC / RC	12 / 150 / 32Ah
Alternator voltage / full load current / engine rpm		14.0 to 14.3 / 45 / 3000
Starter motor current / voltage - cranking	A / V	170 / 9.5
- locked	A / V	330 / 7.1

### Running gear      Uno 45 & Van (903)      1990 to 1994

<b>Brakes -</b>		
Front (min. friction material thickness)	mm	1.5
Rear (min. friction material thickness)	mm	1.5

<b>Tyres</b>		
Saloon	Size	135x13
Estate / Van	Size	135x13
Pressure - front / rear - Saloon	bar	1.9 / 1.9
- Estate / Van	bar	1.9 / 1.9

### Front suspension / wheel alignment

Toe-in (+) / Toe-out (-)	mm [°]	+1.0±1.0
Camber		-25'±30' N/A
Castor		+2°15'±30' N/A
King pin inclination		_

### Rear suspension / wheel alignment

Toe-in (+) / Toe-out (-)	mm [°]	_
Camber		_

### Torque wrench settings      Uno 45 & Van (903)      1990 to 1994

Cylinder head - stage 1	Nm	30 <sup>3</sup>
- stage 2	Nm	60 <sup>3</sup>
Cylinder head - stage 3	Nm	_
- stage 4	Nm	_
Big-end bearings	Nm	41
Main bearings	Nm	70
Clutch cover	Nm	16
Flywheel [driveplate]	Nm	44
Front hubs	Nm	294
Rear hubs	Nm	216
Wheel nuts / bolts	Nm	86
Spark plugs	Nm	25 to 30

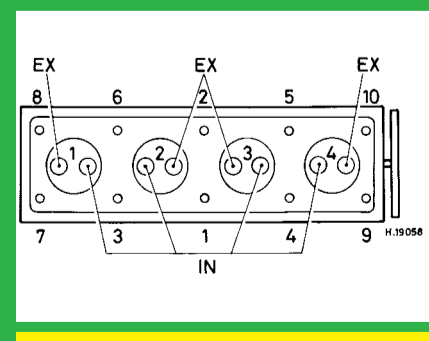
### Capacities      Uno 45 & Van (903)      1990 to 1994

Engine oil & filter	litres	3.9
Gearbox - 4-speed [5-speed]	litres	2.4
Automatic transmission - refill	litres	_
Final drive	litres	WT
Cooling system	litres	4.6
Fuel tank	litres	42

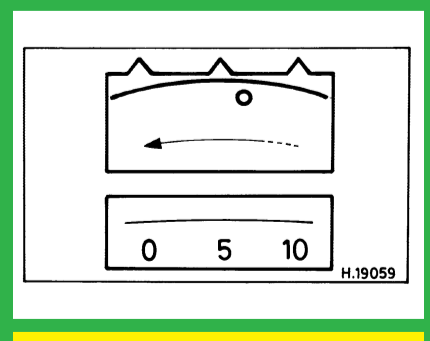
### Notes and Illustrations

<sup>1</sup>M: 0.42 to 0.48  
<sup>2</sup>M: 0.22 to 0.27  
<sup>3</sup>Engine no. 8 581 470 ▶: 20, then 30, then +90° + 90°

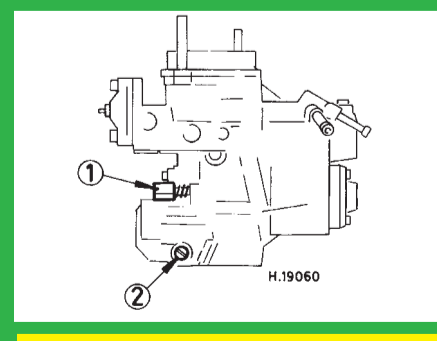
1: Idle speed      2: CO / Mixture



**903 cm<sup>3</sup>**



**903 cm<sup>3</sup>**



**Weber 32 ICEV 61/250**