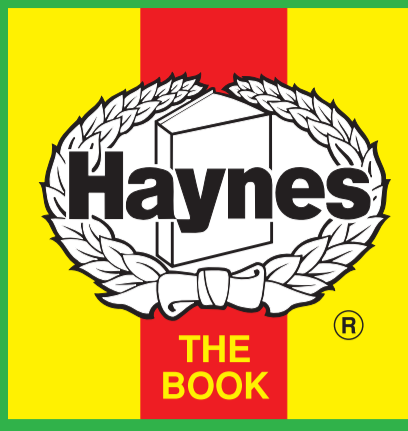


[Engine & Cooling](#)
[Fuel](#)
[Ignition](#)
[Electrical](#)
[Running gear](#)
[Torque settings](#)
[Capacities](#)
[Notes & Illustrations](#)


Automotive Technical DATA BOOK

Click on one of the buttons above to view data for this car. To return to this screen and make another choice, click anywhere on the data screen.

[MENU](#)
[HELP](#)

Engine and cooling system Uno 45 (999) 1990 to 1992

Type		156 A2.000 (FIRE) OHC. 33kW
Capacity (cm ³) / number of cylinders		999 / 4
Compression ratio / pressure	bar	9.5±0.2 / _
Oil pressure	bar	[3.4 to 4.9]
Oil temperature	°C	100
Valve clearance - inlet	mm	0.30±0.05
Valve clearance - exhaust	mm	0.40±0.05
Firing order		1-3-4-2
No 1 cylinder position		TBE
Thermostat opening temperature	°C	87±2
Radiator cap pressure	bar	0.98

Fuel system Uno 45 (999) 1990 to 1992

Idle speed - manual [auto]	rpm	775±25
Fast idle speed - manual [auto]	rpm	_
CO @ idle speed [3000 rpm] - see page VI	%	1.5±0.5
HC @ idle speed [3000 rpm] - see page VI	ppm	≤1200
CO ₂ @ idle speed [3000 rpm] - see page VI	%	_
O ₂ @ idle speed [3000 rpm] - see page VI	%	_
Carburettor / fuel injection		Weber
Type / ref		32 TLF4/252
Main jet / needle		105
Injection pressure	bar	_
Pump pressure	bar	≥0.20
Octane rating	RON	97[E 95 RON]

Ignition system Uno 45 (999) 1990 to 1992

Type		Electronic
Ignition coil		Marelli BAE 506 D
Primary resistance	ohms	0.666 to 0.814
Ballast resistor	ohms	_
Voltage - Tmnl 15(+) to earth	V	_
Distributor		Marelli/Ducellier
Points gap (air gap)	mm	[0.30 to 0.40]
Dwell angle	° (%)	_
Condenser capacity	µF	_
Rotation		Clockwise
Ignition timing - basic [static	° Crankshaft @ rpm	2 BTDC @ 750 to 800
V = Vacuum NV = No Vacuum		V
Total ignition advance	° Crankshaft @ rpm	_
	° Crankshaft @ rpm	_
	° Crankshaft @ rpm	_
Centrifugal check.	° Crankshaft @ rpm	-1±2 @ 1000±200
	° Crankshaft @ rpm	9±2 @ 1500±200
	° Crankshaft @ rpm	28±2 @ 4500±200
Vacuum range check	mbar	133 to 307
Maximum vacuum advance	° Crankshaft	13±1
Spark plugs		Bosch/Champion
Type		FR7DC / RC9YC
Electrode gap	mm	0.70 to 0.80

Electrical system Uno 45 (999) 1990 to 1992

Battery	V / CC / RC	12 / 150 / 32Ah
Alternator voltage / full load current / engine rpm		14.0 to 14.4 / 45, 50 / 3500
Starter motor current / voltage - cranking	A / V	180 to 190 / 9.1 to 10.4
- locked	A / V	324 to 420 / 7.1 to 8.5

Running gear Uno 45 (999) 1990 to 1992

Brakes -		
Front (min. friction material thickness)	mm	1.5
Rear (min. friction material thickness)	mm	1.5

Tyres		
Saloon	Size	135x13: 155/70x13
Estate / Van	Size	_
Pressure - front / rear - Saloon	bar	1.9 / 1.9
- Estate / Van	bar	_

Front suspension / wheel alignment		
Toe-in (+) / Toe-out (-)	mm [°]	+1.0±1.0
Camber		-30'±30' N/A
Castor		+2°10'±15' N/A
King pin inclination		_

Rear suspension / wheel alignment		
Toe-in (+) / Toe-out (-)	mm [°]	_
Camber		_

Torque wrench settings Uno 45 (999) 1990 to 1992

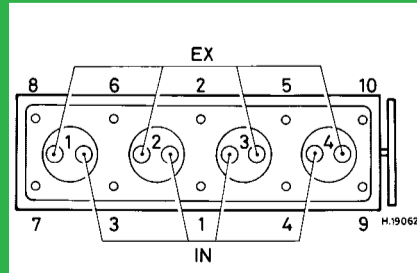
Cylinder head - stage 1	Nm	30
- stage 2	Nm	+ 90°
Cylinder head - stage 3	Nm	+ 90°
- stage 4	Nm	_
Big-end bearings	Nm	41
Main bearings	Nm	40 + 90°
Clutch cover	Nm	16
Flywheel [driveplate]	Nm	44
Front hubs	Nm	294
Rear hubs	Nm	216
Wheel nuts / bolts	Nm	86
Spark plugs	Nm	25 to 30

Capacities Uno 45 (999) 1990 to 1992

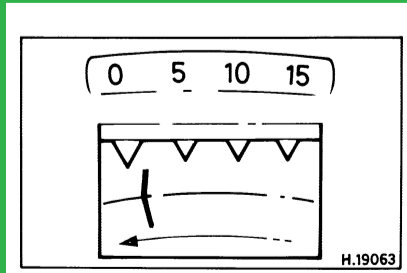
Engine oil & filter	litres	3.9
Gearbox - 4-speed [5-speed]	litres	2.4
Automatic transmission - refill	litres	_
Final drive	litres	WT
Cooling system	litres	4.6
Fuel tank	litres	42

Notes and Illustrations

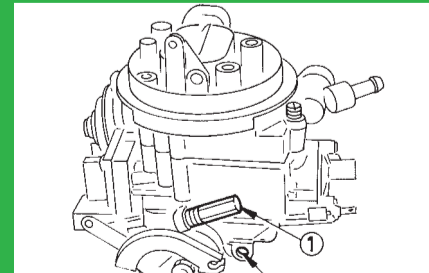
1: Idle speed 2: CO / Mixture



999 cm³



999 cm³



Weber TLF