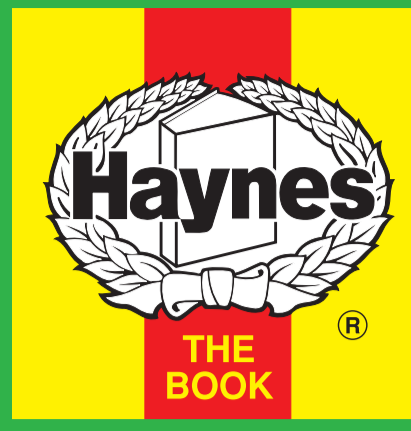


Engine & Cooling	Fuel	Ignition	Electrical	Running gear	Torque settings	Capacities	Notes & Illustrations
------------------	------	----------	------------	--------------	-----------------	------------	-----------------------



Automotive Technical DATA BOOK

Click on one of the buttons above to view data for this car. To return to this screen and make another choice, click anywhere on the data screen.

MENU

HELP

Engine and cooling system Uno 1.1ie CAT 1989 to 1995

Type		156 C.046 (FIRE) 37kW US83
Capacity (cm ³) / number of cylinders		1108 / 4
Compression ratio / pressure	bar	9.6±0.2 / _
Oil pressure	bar	[3.4 to 4.9]
Oil temperature	°C	100
Valve clearance - inlet	mm	0.30±0.05
Valve clearance - exhaust	mm	0.40±0.05
Firing order		1-3-4-2
No 1 cylinder position		TBE
Thermostat opening temperature	°C	87±2
Radiator cap pressure	bar	0.98

Fuel system Uno 1.1ie CAT 1989 to 1995

Idle speed - manual [auto]	rpm	850±50 N/A
Fast idle speed - manual [auto]	rpm	_
CO @ idle speed [3000 rpm] - see page VI	%	0.4 to 1.0. Ex: ≤0.35 N/A
HC @ idle speed [3000 rpm] - see page VI	ppm	≤600. Ex: ≤90
CO ₂ @ idle speed [3000 rpm] - see page VI	%	≥13.0
O ₂ @ idle speed [3000 rpm] - see page VI	%	_
Carburettor / fuel injection		Bosch
Type / ref		Mono-Jetronic SPI
Main jet / needle		_
Injection pressure	bar	_
Pump pressure	bar	1.1
Octane rating	RON	95[U]

Ignition system Uno 1.1ie CAT 1989 to 1995

Type		Electronic
Ignition coil		Marelli BAE 504 D
Primary resistance	ohms	0.666 to 0.814
Ballast resistor	ohms	_
Voltage - Tmnl 15(+) to earth	V	_
Distributor		Marelli
Points gap (air gap)	mm	[0.30 to 0.40]
Dwell angle	° (%)	_
Condenser capacity	µF	_
Rotation		Clockwise
Ignition timing - basic [static	° Crankshaft @ rpm	0±2 BTDC @ 850±50
V = Vacuum NV = No Vacuum		NV
Total ignition advance	° Crankshaft @ rpm	7±2 BTDC @ 850±50
	° Crankshaft @ rpm	_
	° Crankshaft @ rpm	_
Centrifugal check.	° Crankshaft @ rpm	0±2 @ 1000±200
	° Crankshaft @ rpm	15±2 @ 1900±200
	° Crankshaft @ rpm	28±2 @ 5000±200
Vacuum range check	mbar	147 to 267
Maximum vacuum advance	° Crankshaft	7±1
Spark plugs		Champion
Type		RN9YCC
Electrode gap	mm	0.85 to 0.95

Electrical system Uno 1.1ie CAT 1989 to 1995

Battery	V / CC / RC	12 / 150 / 32Ah
Alternator voltage / full load current / engine rpm		14.0 to 14.3 / 55 / 3000
Starter motor current / voltage - cranking	A / V	180 to 190 / 9.1 to 10.4
- locked	A / V	324 to 420 / 7.1 to 8.5

Running gear Uno 1.1ie CAT 1989 to 1995

Brakes -		
Front (min. friction material thickness)	mm	1.5
Rear (min. friction material thickness)	mm	1.5
Tyres		
Saloon	Size	155/70x13
Estate / Van	Size	_
Pressure - front / rear - Saloon	bar	1.9 / 1.9
- Estate / Van	bar	_
Front suspension / wheel alignment		
Toe-in (+) / Toe-out (-)	mm [°]	+1.0±1.0
Camber		+25'±30' N/A
Castor		+2°±30' N/A
King pin inclination		_
Rear suspension / wheel alignment		
Toe-in (+) / Toe-out (-)	mm [°]	_
Camber		_

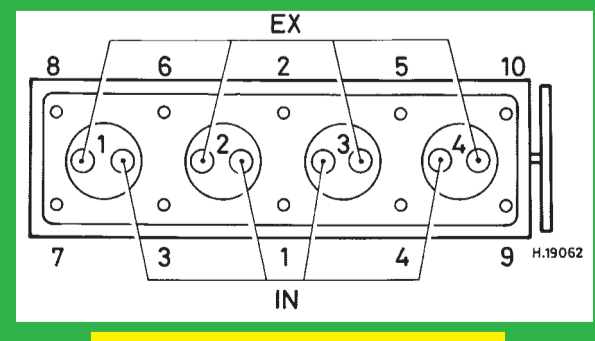
Torque wrench settings Uno 1.1ie CAT 1989 to 1995

Cylinder head - stage 1	Nm	30
- stage 2	Nm	+ 90°
Cylinder head - stage 3	Nm	+ 90°
- stage 4	Nm	_
Big-end bearings	Nm	41
Main bearings	Nm	40 + 90°
Clutch cover	Nm	16
Flywheel [driveplate]	Nm	44
Front hubs	Nm	294
Rear hubs	Nm	216
Wheel nuts / bolts	Nm	86
Spark plugs	Nm	25 to 30

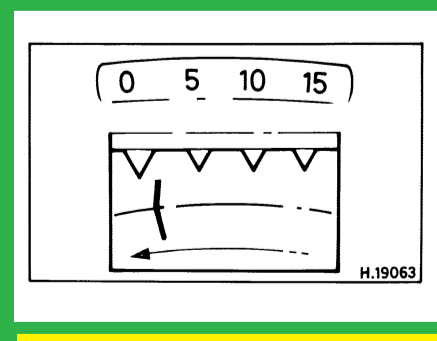
Capacities Uno 1.1ie CAT 1989 to 1995

Engine oil & filter	litres	3.75
Gearbox - 4-speed [5-speed]	litres	2.4
Automatic transmission - refill	litres	_
Final drive	litres	WT
Cooling system	litres	4.6
Fuel tank	litres	38

Notes and Illustrations



1108 cm³



1108 cm³