

Engine & Cooling	Fuel	Ignition	Electrical	Running gear	Torque settings	Capacities	Notes & Illustrations
------------------	------	----------	------------	--------------	-----------------	------------	-----------------------



Automotive Technical DATA BOOK

Click on one of the buttons above to view data for this car. To return to this screen and make another choice, click anywhere on the data screen.

MENU

HELP

Engine and cooling system Uno 70 (1300) 1985 to 1988

Type		1149 A7.000 or 149 A7.000
Capacity (cm ³) / number of cylinders		1299 / 4
Compression ratio / pressure	bar	9.5 / _
Oil pressure	bar	[3.4 to 4.9]
Oil temperature	°C	100
Valve clearance - inlet	mm	0.40±0.05
Valve clearance - exhaust	mm	0.50±0.05
Firing order		1-3-4-2
No 1 cylinder position		TBE
Thermostat opening temperature	°C	80 to 84
Radiator cap pressure	bar	0.98

Fuel system Uno 70 (1300) 1985 to 1988

Idle speed - manual [auto]	rpm	850±50
Fast idle speed - manual [auto]	rpm	1300
CO @ idle speed [3000 rpm] - see page VI	%	1.0±0.5
HC @ idle speed [3000 rpm] - see page VI	ppm	≤1200
CO ₂ @ idle speed [3000 rpm] - see page VI	%	_
O ₂ @ idle speed [3000 rpm] - see page VI	%	_
Carburettor / fuel injection		Weber
Type / ref		30-32 DMTE 12/150
Main jet / needle		90, 97
Injection pressure	bar	_
Pump pressure	bar	0.18
Octane rating	RON	98[R]

Ignition system Uno 70 (1300) 1985 to 1988

Type		Electronic
Ignition coil		Marelli BAE 506A
Primary resistance	ohms	0.756 to 0.924
Ballast resistor	ohms	_
Voltage - Tmnl 15(+) to earth	V	_
Distributor		Marelli
Points gap (air gap)	mm	[0.30 to 0.40]
Dwell angle	° (%)	_
Condenser capacity	µF	_
Rotation		Clockwise
Ignition timing - basic [static	° Crankshaft @ rpm	10 BTDC @ idle
V = Vacuum NV = No Vacuum		NV
Total ignition advance	° Crankshaft @ rpm	_
	° Crankshaft @ rpm	_
	° Crankshaft @ rpm	_
Centrifugal check.	° Crankshaft @ rpm	0 @ 1400 to 1800
	° Crankshaft @ rpm	9 to 13 @ 3000
	° Crankshaft @ rpm	22 to 26 @ 4800
Vacuum range check	mbar	107 to 267
Maximum vacuum advance	° Crankshaft	10 to 14
Spark plugs		Bosch/Champion
Type		WR7DC / RN9YC
Electrode gap	mm	0.70 to 0.80

Electrical system Uno 70 (1300) 1985 to 1988

Battery	V / CC / RC	12 / 175 / 60
Alternator voltage / full load current / engine rpm		14.0 to 14.4 / _ / 3500
Starter motor current / voltage - cranking	A / V	170 / 9.1
- locked	A / V	320 / 7

Running gear Uno 70 (1300) 1985 to 1988

Brakes -		
Front (min. friction material thickness)	mm	1.5
Rear (min. friction material thickness)	mm	1.5

Tyres		
Saloon	Size	155/70x13; 165/65x13
Estate / Van	Size	_
Pressure - front / rear - Saloon	bar	1.9 / 1.9
- Estate / Van	bar	_

Front suspension / wheel alignment

Toe-in (+) / Toe-out (-)	mm [°]	+1.0±1.0
Camber		+25'±30'
Castor		+2°±20'
King pin inclination		_

Rear suspension / wheel alignment

Toe-in (+) / Toe-out (-)	mm [°]	_
Camber		_

Torque wrench settings Uno 70 (1300) 1985 to 1988

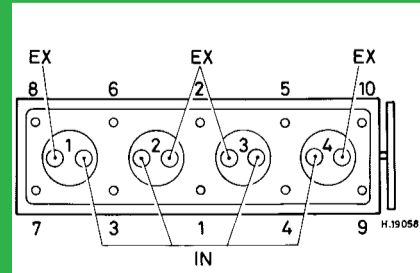
Cylinder head - stage 1	Nm	20
- stage 2	Nm	40
Cylinder head - stage 3	Nm	+ 90°
- stage 4	Nm	+ 90°
Big-end bearings	Nm	51
Main bearings	Nm	80
Clutch cover	Nm	16
Flywheel [driveplate]	Nm	83
Front hubs	Nm	294
Rear hubs	Nm	216
Wheel nuts / bolts	Nm	86
Spark plugs	Nm	25 to 30

Capacities Uno 70 (1300) 1985 to 1988

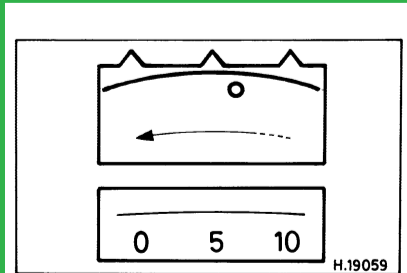
Engine oil & filter	litres	4.1
Gearbox - 4-speed [5-speed]	litres	2.4
Automatic transmission - refill	litres	_
Final drive	litres	WT
Cooling system	litres	6.2
Fuel tank	litres	42

Notes and Illustrations

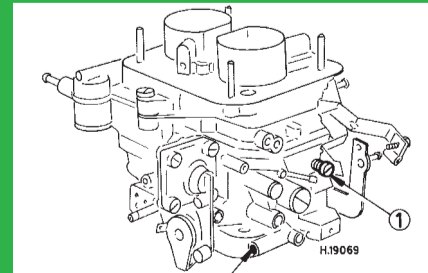
1: Idle speed 2: CO / Mixture



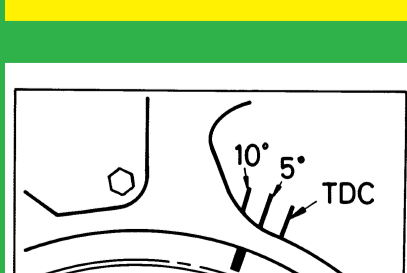
1299 cm³



1299 cm³



Weber DMTE



1299 cm³, alternative