

| | | | | | | | |
|------------------|------|----------|------------|--------------|-----------------|------------|-----------------------|
| Engine & Cooling | Fuel | Ignition | Electrical | Running gear | Torque settings | Capacities | Notes & Illustrations |
|------------------|------|----------|------------|--------------|-----------------|------------|-----------------------|



Automotive Technical DATA BOOK

Click on one of the buttons above to view data for this car. To return to this screen and make another choice, click anywhere on the data screen.

MENU

HELP

Engine and cooling system Panda 1000 & Selecta 1988 to 1992

| | | |
|---|-----|----------------------------|
| Type | | 156 A2.000 (FIRE) OHC 33kW |
| Capacity (cm ³) / number of cylinders | | 999 / 4 |
| Compression ratio / pressure | bar | 9.8±0.2 / _ |
| Oil pressure | bar | [2.9 to 3.9] |
| Oil temperature | °C | 100 |
| Valve clearance - inlet | mm | 0.30±0.05 |
| Valve clearance - exhaust | mm | 0.40±0.05 |
| Firing order | | 1-3-4-2 |
| No 1 cylinder position | | TBE |
| Thermostat opening temperature | °C | 85 to 89 |
| Radiator cap pressure | bar | 0.98 |

Fuel system Panda 1000 & Selecta 1988 to 1992

| | | |
|---|-----|---------------------------|
| Idle speed - manual [auto] | rpm | 750 to 800 |
| Fast idle speed - manual [auto] | rpm | _ |
| CO @ idle speed [3000 rpm] - see page VI | % | _ |
| HC @ idle speed [3000 rpm] - see page VI | ppm | _ |
| CO ₂ @ idle speed [3000 rpm] - see page VI | % | _ |
| O ₂ @ idle speed [3000 rpm] - see page VI | % | _ |
| Carburettor / fuel injection | | Weber |
| Type / ref | | 32 TLF 6/251 [26/351] |
| Main jet / needle | | 105 |
| Injection pressure | bar | _ |
| Pump pressure | bar | ≥0.20 |
| Octane rating | RON | 97[E 95 RON] ¹ |

Ignition system Panda 1000 & Selecta 1988 to 1992

| | | |
|---------------------------------|--------------------|--------------------------|
| Type | | Contact breaker - CIS |
| Ignition coil | | Various |
| Primary resistance | ohms | 2.6 to 3.4 (typical) |
| Ballast resistor | ohms | _ |
| Voltage - Tmnl 15(+) to earth | V | _ |
| Distributor | | Marelli/Ducellier |
| Points gap (air gap) | mm | 0.45 |
| Dwell angle | ° (%) | 53±2 |
| Condenser capacity | µF | 0.20 to 0.25 |
| Rotation | | Clockwise |
| Ignition timing - basic [static | ° Crankshaft @ rpm | 15±1 [AT: 2] BTDC @ idle |
| V = Vacuum NV = No Vacuum | | V |
| Total ignition advance | ° Crankshaft @ rpm | _ |
| | ° Crankshaft @ rpm | _ |
| | ° Crankshaft @ rpm | _ |
| Centrifugal check. | ° Crankshaft @ rpm | 0 @ 800 to 1200 |
| | ° Crankshaft @ rpm | 17 to 21 @ 3000 |
| | ° Crankshaft @ rpm | 26 to 30 @ 4300 |
| Vacuum range check | mbar | 133 to 307 |
| Maximum vacuum advance | ° Crankshaft | 12 to 14 |
| Spark plugs | | Bosch/Champion |
| Type | | FR7DC / RC9YC |
| Electrode gap | mm | 0.70 to 0.80 |

Electrical system Panda 1000 & Selecta 1988 to 1992

| | | |
|---|-------------|--------------------------|
| Battery | V / CC / RC | 12 / 175 / 60 (30Ah) |
| Alternator voltage / full load current / engine rpm | | 14.0 to 14.3 / 45 / 3500 |
| Starter motor current / voltage - cranking | A / V | 175 / 9.2 |
| - locked | A / V | 350 / 6.7 |

Running gear Panda 1000 & Selecta 1988 to 1992

| | | |
|---|--------|------------------------|
| Brakes - | | |
| Front (min. friction material thickness) | mm | 1.5 |
| Rear (min. friction material thickness) | mm | 1.5 |
| Tyres | | |
| Saloon | Size | 135x13: 155/65x13 |
| Estate / Van | Size | _ |
| Pressure - front / rear - Saloon | bar | 2.0 / 2.0 ² |
| - Estate / Van | bar | _ |
| Front suspension / wheel alignment | | |
| Toe-in (+) / Toe-out (-) | mm [°] | -2.0±2.0 |
| Camber | | +1°±30' |
| Castor | | +2°30'±30' |
| King pin inclination | | _ |
| Rear suspension / wheel alignment | | |
| Toe-in (+) / Toe-out (-) | mm [°] | 0 |
| Camber | | 0 |

Torque wrench settings Panda 1000 & Selecta 1988 to 1992

| | | |
|-------------------------|----|----------|
| Cylinder head - stage 1 | Nm | 30 |
| - stage 2 | Nm | + 90° |
| Cylinder head - stage 3 | Nm | + 90° |
| - stage 4 | Nm | _ |
| Big-end bearings | Nm | 41 |
| Main bearings | Nm | 40 + 90° |
| Clutch cover | Nm | 16 |
| Flywheel [driveplate] | Nm | 44 |
| Front hubs | Nm | 216 |
| Rear hubs | Nm | 216 |
| Wheel nuts / bolts | Nm | 86 |
| Spark plugs | Nm | 25 to 30 |

Capacities Panda 1000 & Selecta 1988 to 1992

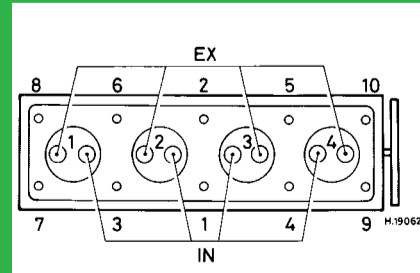
| | | |
|---------------------------------|--------|----------------|
| Engine oil & filter | litres | 3.88 |
| Gearbox - 4-speed [5-speed] | litres | 2.4 |
| Automatic transmission - refill | litres | 3.5. 91 ▶: 1.8 |
| Final drive | litres | WT |
| Cooling system | litres | 5.2 |
| Fuel tank | litres | 40 |

Notes and Illustrations

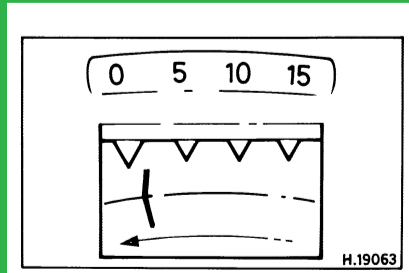
¹Chassis 04112510 ▶, except 05*****

²155/65x13: 2.2 / 2.2

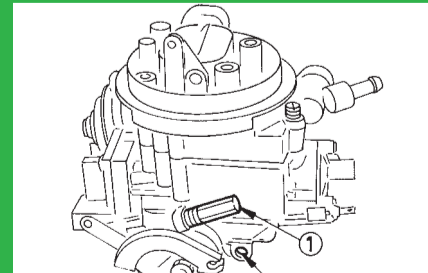
1: Idle speed 2: CO / Mixture



999 cm³



999 cm³



Weber TLF