

Engine & Cooling	Fuel	Ignition	Electrical	Running gear	Torque settings	Capacities	Notes & Illustrations
------------------	------	----------	------------	--------------	-----------------	------------	-----------------------



# Automotive Technical DATA BOOK

Click on one of the buttons above to view data for this car. To return to this screen and make another choice, click anywhere on the data screen.

MENU

HELP

## Engine and cooling system Panda 1.0ie & 4x4 CAT 1991 to 1996

Type		156 A2.246 OHC 33kW US83
Capacity (cm <sup>3</sup> ) / number of cylinders		999 / 4
Compression ratio / pressure	bar	9.0 / _
Oil pressure	bar	[2.9 to 3.9]
Oil temperature	°C	100
Valve clearance - inlet	mm	0.30±0.05
Valve clearance - exhaust	mm	0.40±0.05
Firing order		1-3-4-2
No 1 cylinder position		TBE
Thermostat opening temperature	°C	85 to 89
Radiator cap pressure	bar	0.98

## Fuel system Panda 1.0ie & 4x4 CAT 1991 to 1996

Idle speed - manual [auto]	rpm	800 to 900
Fast idle speed - manual [auto]	rpm	_
CO @ idle speed [3000 rpm] - see page VI	%	_
HC @ idle speed [3000 rpm] - see page VI	ppm	_
CO <sub>2</sub> @ idle speed [3000 rpm] - see page VI	%	_
O <sub>2</sub> @ idle speed [3000 rpm] - see page VI	%	_
Carburettor / fuel injection		Bosch
Type / ref		Mono-Jetronic SPI / Weber SPI
Main jet / needle		_
Injection pressure	bar	_
Pump pressure	bar	_
Octane rating	RON	95[U]

## Ignition system Panda 1.0ie & 4x4 CAT 1991 to 1996

Type		Electronic
Ignition coil		Marelli BAE 506D
Primary resistance	ohms	2.6 to 3.4
Ballast resistor	ohms	_
Voltage - Tmnl 15(+) to earth	V	_
Distributor		Marelli
Points gap (air gap)	mm	_
Dwell angle	° (%)	_
Condenser capacity	µF	_
Rotation		Clockwise
Ignition timing - basic [static	° Crankshaft @ rpm	2±2 BTDC @ 800 to 900
V = Vacuum NV = No Vacuum		NV
Total ignition advance	° Crankshaft @ rpm	15±2 BTDC @ 800 to 900
	° Crankshaft @ rpm	_
	° Crankshaft @ rpm	_
Centrifugal check.	° Crankshaft @ rpm	Computer control
	° Crankshaft @ rpm	_
	° Crankshaft @ rpm	_
Vacuum range check	mbar	Computer control
Maximum vacuum advance	° Crankshaft	_
Spark plugs		Champion
Type		RC9YCC
Electrode gap	mm	0.85 to 0.95

## Electrical system Panda 1.0ie & 4x4 CAT 1991 to 1996

Battery	V / CC / RC	12 / 175 / 60 (40Ah)
Alternator voltage / full load current / engine rpm		14.0 to 14.3 / 55 / 3500
Starter motor current / voltage - cranking	A / V	175 / 9.2
- locked	A / V	350 / 6.7

## Running gear Panda 1.0ie & 4x4 CAT 1991 to 1996

<b>Brakes -</b>		
Front (min. friction material thickness)	mm	1.5
Rear (min. friction material thickness)	mm	1.5
<b>Tyres</b>		
Saloon	Size	135x13: 145x13: 155/65x13
Estate / Van	Size	_
Pressure - front / rear - Saloon	bar	1.8 / 2.0 <sup>1</sup>
- Estate / Van	bar	_
<b>Front suspension / wheel alignment</b>		
Toe-in (+) / Toe-out (-)	mm [°]	-2.0±2.0 <sup>2</sup>
Camber		+1°±30'. 4x4: +1°52'±30'
Castor		+2°30'±30'
King pin inclination		_
<b>Rear suspension / wheel alignment</b>		
Toe-in (+) / Toe-out (-)	mm [°]	0
Camber		0

## Torque wrench settings Panda 1.0ie & 4x4 CAT 1991 to 1996

Cylinder head - stage 1	Nm	30
- stage 2	Nm	+ 90°
Cylinder head - stage 3	Nm	+ 90°
- stage 4	Nm	_
Big-end bearings	Nm	41
Main bearings	Nm	40 + 90°
Clutch cover	Nm	16
Flywheel [driveplate]	Nm	44
Front hubs	Nm	220
Rear hubs	Nm	70
Wheel nuts / bolts	Nm	90
Spark plugs	Nm	25 to 30

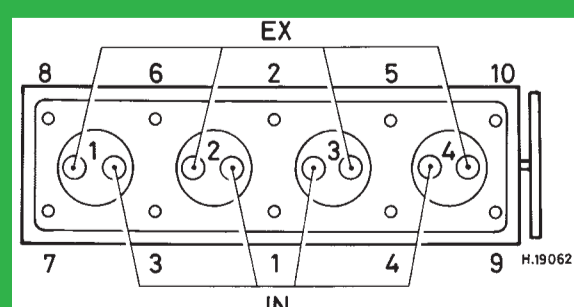
## Capacities Panda 1.0ie & 4x4 CAT 1991 to 1996

Engine oil & filter	litres	3.8
Gearbox - 4-speed [5-speed]	litres	2.4
Automatic transmission - refill	litres	1.8
Final drive	litres	WT
Cooling system	litres	5.2
Fuel tank	litres	40. 4x4: 35

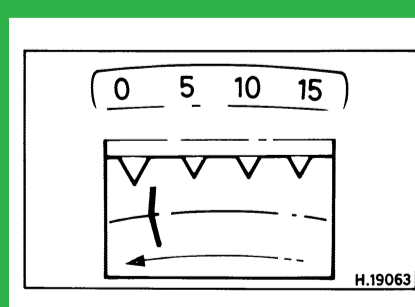
## Notes and Illustrations

<sup>1</sup>4x4: 2.0 / 2.0

<sup>2</sup>4x4: -4.0±2.0



999 cm<sup>3</sup>



999 cm<sup>3</sup>